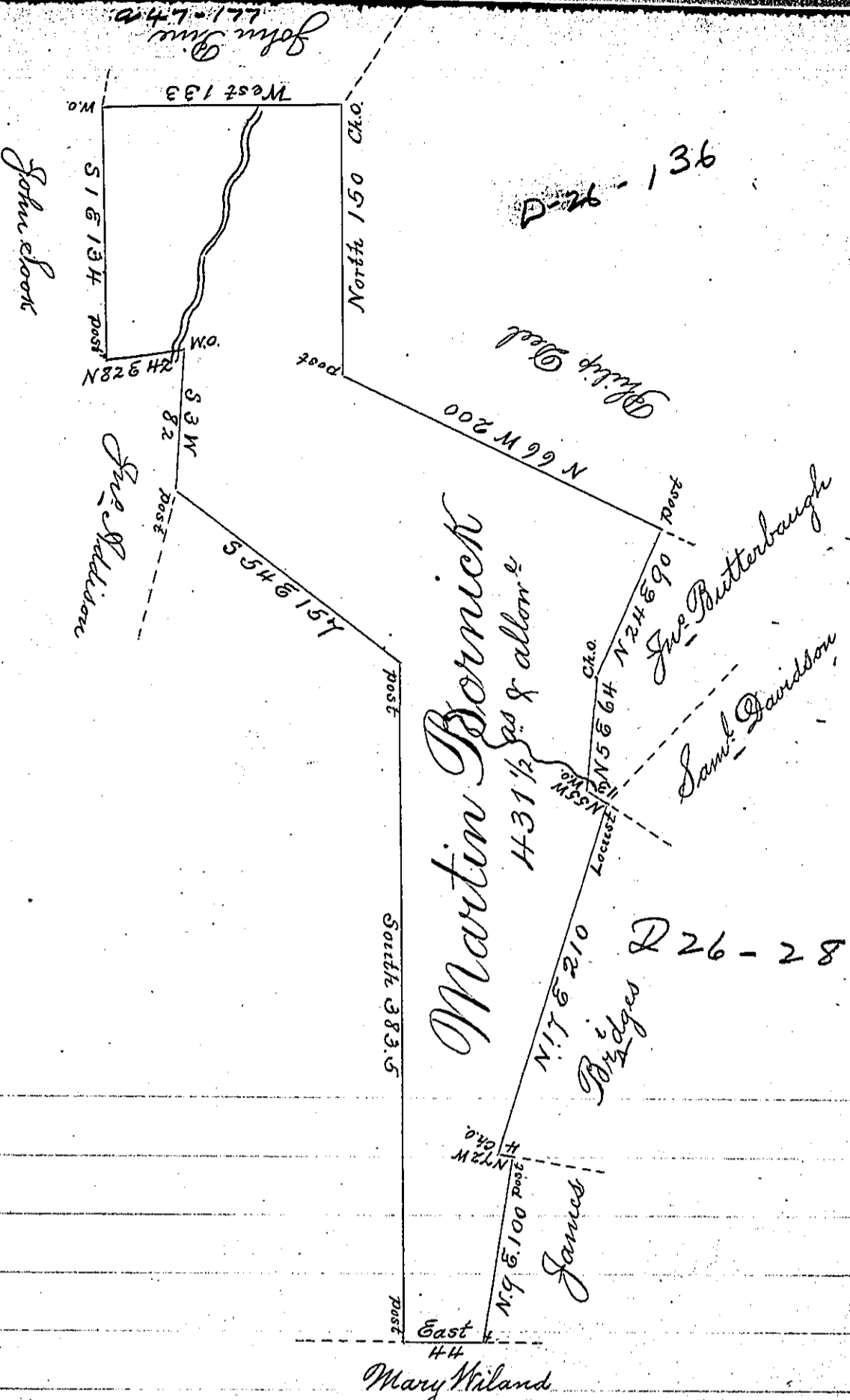


197 254



Situated on the waters of Cove Creek & Eritts Creek at the head of Friends Cove in Colerain Township Bedford County Containing $H.31\frac{1}{2}$ Acres with the Usual Allowance of Six p^t Cent for Roads &c. Surveyed for Martin Bornick the 3^d Day of December 1795 on Warrant Dated the 8th Day of May 1794

George Woods Junr. D.S.

To Daniel Brodhead Esq. S.G.

IN TESTIMONY that the above is a copy of the original remaining on file in the Department of Internal Affairs of Pennsylvania, made conformably to an Act of Assembly approved the 16th day of February, 1833, I have hereunto set my Hand and caused the Seal of said Department to be affixed at Harrisburg, this sixth day of January 1903

James W. Latta
Secretary of Internal Affairs.